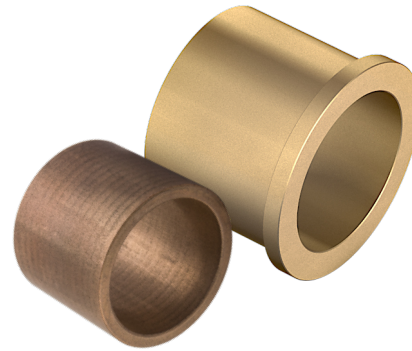




# **PLAIN BEARINGS**

**High Performance plain bearings  
made from sintered bronze**

# Sintered bronze plain bearing



**maintenance-free - oil-soaked, self-lubricating - ready to install**

According to DIN 1850 / ISO 2795 and also outside these standards

- Suitable for high speeds with low load
- Self-lubricating, oil-soaked, maintenance-free with solid lubricant MoS<sub>2</sub> on request
- Materials:  
Sintered bronze (Cu-Sn alloy), soaked in oil or with solid lubricant (e.g. MoS<sub>2</sub>) alternatively sintered iron or sintered steel
- Mounting advice:  
The use of an assembly mandrel is expedient

## PROPERTIES

### MATERIAL PROPERTIES

		Sintered bronze		Sintered iron
		oil-soaked	with MoS <sub>2</sub>	
Spec. load capacity static	[N/mm <sup>2</sup> ]	≤ 10	≤ 20	≤ 45
Spec. load capacity dynamic	[N/mm <sup>2</sup> ]	≤ 5	≤ 2,5	≤ 10
Glide speed	[m/s]	≤ 6,0	≤ 0,25	≤ 4,0
Friction value	[μ]	0,05 bis 0,20	0,05 bis 0,15	0,05 bis 0,20
Temperature load	[ °C]	-20 bis +100	-60 bis +300	-20 bis +100
Max Pv.- value	[N/mm <sup>2</sup> x m/s]	1,6	0,4	1,6

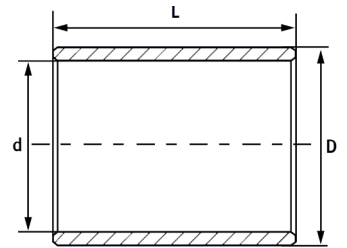
### TOLERANCE SPECIFICATIONS

Housing bore - Ø	H7
Bushing inside - Ø after installation	H7 / H8 oder F7 / F8
Shaft tolerance	f7

### SHAFT MATERIAL

Steel >200HB ground, roughness depth ≤ Rz4

**GBZ** Cylinder bushings

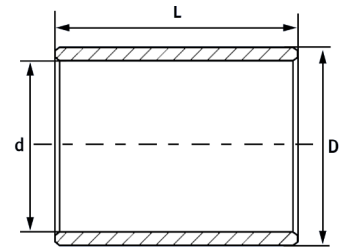


Article no.	d	D	L
GBZ 020404	2	4	4
GBZ 020406	2	4	6
GBZ 020502	2	5	2
GBZ 020503	2	5	3
GBZ 020505	2	5	5
GBZ 02,50602	2.5	6	2
GBZ 02,50603	2.5	6	3
GBZ 030603	3	6	3
GBZ 030604	3	6	4
GBZ 030605	3	6	5
GBZ 030606	3	6	6
GBZ 030610	3	6	10
GBZ 040605	4	6	5
GBZ 040608	4	6	8
GBZ 040610	4	6	10
GBZ 040704	4	7	4
GBZ 040706	4	7	6
GBZ 040708	4	7	8
GBZ 040712	4	7	12
GBZ 040804	4	8	4
GBZ 040805	4	8	5
GBZ 040806	4	8	6
GBZ 040808	4	8	8
GBZ 040810	4	8	10
GBZ 040812	4	8	12
GBZ 041008	4	10	8
GBZ 050805	5	8	5
GBZ 050806	5	8	6
GBZ 050808	5	8	8
GBZ 050809	5	8	9
GBZ 050810	5	8	10
GBZ 050812	5	8	12
GBZ 050815	5	8	15
GBZ 050816	5	8	16
GBZ 050904	5	9	4
GBZ 050905	5	9	5
GBZ 050908	5	9	8
GBZ 050910	5	9	10
GBZ 050912	5	9	12

Article no.	d	D	L
GBZ 051005	5	10	5
GBZ 051006	5	10	6
GBZ 051008	5	10	8
GBZ 051010	5	10	10
GBZ 051012	5	10	12
GBZ 051015	5	10	15
GBZ 060812	6	8	12
GBZ 060814	6	8	14
GBZ 060815	6	8	15
GBZ 060904	6	9	4
GBZ 060906	6	9	6
GBZ 060910	6	9	10
GBZ 060912	6	9	12
GBZ 060916	6	9	16
GBZ 061004	6	10	4
GBZ 061005	6	10	5
GBZ 061006	6	10	6
GBZ 061010	6	10	10
GBZ 061012	6	10	12
GBZ 061015	6	10	15
GBZ 061016	6	10	16
GBZ 061205	6	12	5
GBZ 061206	6	12	6
GBZ 061208	6	12	8
GBZ 061210	6	12	10
GBZ 061212	6	12	12
GBZ 061215	6	12	15
GBZ 061216	6	12	16
GBZ 061412	6	14	12
GBZ 071005	7	10	5
GBZ 071008	7	10	8
GBZ 071010	7	10	10
GBZ 081006	8	10	6
GBZ 081010	8	10	10
GBZ 081012	8	10	12
GBZ 081015	8	10	15
GBZ 081108	8	11	8
GBZ 081112	8	11	12
GBZ 081116	8	11	16

Article no.	d	D	L
GBZ 081120	8	11	20
GBZ 081206	8	12	6
GBZ 081208	8	12	8
GBZ 081210	8	12	10
GBZ 081212	8	12	12
GBZ 081215	8	12	15
GBZ 081216	8	12	16
GBZ 081220	8	12	20
GBZ 081408	8	14	8
GBZ 081410	8	14	10
GBZ 081412	8	14	12
GBZ 081415	8	14	15
GBZ 081416	8	14	16
GBZ 081420	8	14	20
GBZ 081816	8	18	16
GBZ 091206	9	12	06
GBZ 091210	9	12	10
GBZ 091214	9	12	14
GBZ 091215	9	12	15
GBZ 091410	9	14	10
GBZ 091412	9	14	12
GBZ 091415	9	14	15
GBZ 091420	9	14	20
GBZ 101208	10	12	8
GBZ 101310	10	13	10
GBZ 101312	10	13	12
GBZ 101315	10	13	15
GBZ 101316	10	13	16
GBZ 101320	10	13	20
GBZ 101325	10	13	25
GBZ 101408	10	14	8
GBZ 101410	10	14	10
GBZ 101413	10	14	13
GBZ 101415	10	14	15
GBZ 101416	10	14	16
GBZ 101420	10	14	20
GBZ 101425	10	14	25
GBZ 101510	10	15	10
GBZ 101512	10	15	12

**GBZ Cylinder bushings**



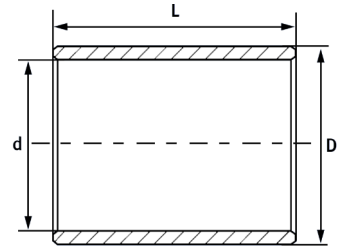
Article no.	d	D	L
GBZ 101515	10	15	15
GBZ 101516	10	15	16
GBZ 101520	10	15	20
GBZ 101525	10	15	25
GBZ 101608	10	16	8
GBZ 101610	10	16	10
GBZ 101612	10	16	12
GBZ 101615	10	16	15
GBZ 101616	10	16	16
GBZ 101620	10	16	20
GBZ 101625	10	16	25
GBZ 101810	10	18	10
GBZ 101815	10	18	15
GBZ 101820	10	18	20
GBZ 101825	10	18	25
GBZ 102025	10	20	25
GBZ 102220	10	22	20
GBZ 121410	12	14	10
GBZ 121412	12	14	12
GBZ 121415	12	14	15
GBZ 121420	12	14	20
GBZ 121510	12	15	10
GBZ 121512	12	15	12
GBZ 121515	12	15	15
GBZ 121516	12	15	16
GBZ 121520	12	15	20
GBZ 121525	12	15	25
GBZ 121608	12	16	8
GBZ 121610	12	16	10
GBZ 121612	12	16	12
GBZ 121615	12	16	15
GBZ 121616	12	16	16
GBZ 121620	12	16	20
GBZ 121625	12	16	25
GBZ 121712	12	17	12
GBZ 121715	12	17	15
GBZ 121716	12	17	16
GBZ 121720	12	17	20
GBZ 121725	12	17	25

Article no.	d	D	L
GBZ 121808	12	18	8
GBZ 121810	12	18	10
GBZ 121812	12	18	12
GBZ 121815	12	18	15
GBZ 121816	12	18	16
GBZ 121820	12	18	20
GBZ 121825	12	18	25
GBZ 121830	12	18	30
GBZ 122012	12	20	12
GBZ 122015	12	20	15
GBZ 122020	12	20	20
GBZ 122025	12	20	25
GBZ 122030	12	20	30
GBZ 131510	13	15	10
GBZ 131511	13	15	11
GBZ 132015	13	20	15
GBZ 141810	14	18	10
GBZ 141814	14	18	14
GBZ 141815	14	18	15
GBZ 141818	14	18	18
GBZ 141820	14	18	20
GBZ 141822	14	18	22
GBZ 141825	14	18	25
GBZ 141828	14	18	28
GBZ 142010	14	20	10
GBZ 142014	14	20	14
GBZ 142015	14	20	15
GBZ 142018	14	20	18
GBZ 142020	14	20	20
GBZ 142022	14	20	22
GBZ 142025	14	20	25
GBZ 142028	14	20	28
GBZ 142030	14	20	30
GBZ 142215	14	22	15
GBZ 142220	14	22	20
GBZ 142225	14	22	25
GBZ 142230	14	22	30
GBZ 151815	15	18	15
GBZ 151820	15	18	20

Article no.	d	D	L
GBZ 151825	15	18	25
GBZ 151830	15	18	30
GBZ 151910	15	19	10
GBZ 151915	15	19	15
GBZ 151916	15	19	16
GBZ 151920	15	19	20
GBZ 151925	15	19	25
GBZ 151932	15	19	32
GBZ 152014	15	20	14
GBZ 152015	15	20	15
GBZ 152020	15	20	20
GBZ 152025	15	20	25
GBZ 152030	15	20	30
GBZ 152110	15	21	10
GBZ 152115	15	21	15
GBZ 152116	15	21	16
GBZ 152120	15	21	20
GBZ 152125	15	21	25
GBZ 152132	15	21	32
GBZ 152215	15	22	15
GBZ 152216	15	22	16
GBZ 152218	15	22	18
GBZ 152220	15	22	20
GBZ 152225	15	22	25
GBZ 152230	15	22	30
GBZ 152540	15	25	40
GBZ 153030	15	30	30
GBZ 162012	16	20	12
GBZ 162015	16	20	15
GBZ 162016	16	20	16
GBZ 162020	16	20	20
GBZ 162025	16	20	25
GBZ 162030	16	20	30
GBZ 162032	16	20	32
GBZ 162212	16	22	12
GBZ 162215	16	22	15
GBZ 162216	16	22	16
GBZ 162220	16	22	20
GBZ 162225	16	22	25



# GBZ Cylinder bushings

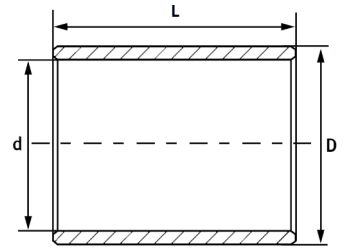


Article no.	d	D	L
GBZ 162230	16	22	30
GBZ 162232	16	22	32
GBZ 162235	16	22	35
GBZ 162415	16	24	15
GBZ 162416	16	24	16
GBZ 162420	16	24	20
GBZ 162428	16	24	28
GBZ 172215	17	22	15
GBZ 172220	17	22	20
GBZ 172225	17	22	25
GBZ 172230	17	22	30
GBZ 172235	17	22	35
GBZ 182212	18	22	12
GBZ 182215	18	22	15
GBZ 182218	18	22	18
GBZ 182220	18	22	20
GBZ 182222	18	22	22
GBZ 182225	18	22	25
GBZ 182228	18	22	28
GBZ 182230	18	22	30
GBZ 182236	18	22	36
GBZ 182412	18	24	12
GBZ 182418	18	24	18
GBZ 182422	18	24	22
GBZ 182428	18	24	28
GBZ 182430	18	24	30
GBZ 182436	18	24	36
GBZ 182516	18	25	16
GBZ 182518	18	25	18
GBZ 182520	18	25	20
GBZ 182522	18	25	22
GBZ 182528	18	25	28
GBZ 182530	18	25	30
GBZ 182535	18	25	35
GBZ 182536	18	25	36
GBZ 202416	20	24	16
GBZ 202420	20	24	20
GBZ 202425	20	24	25
GBZ 202432	20	24	32

Article no.	d	D	L
GBZ 202515	20	25	15
GBZ 202516	20	25	16
GBZ 202520	20	25	20
GBZ 202525	20	25	25
GBZ 202530	20	25	30
GBZ 202532	20	25	32
GBZ 202535	20	25	35
GBZ 202615	20	26	15
GBZ 202616	20	26	16
GBZ 202620	20	26	20
GBZ 202625	20	26	25
GBZ 202630	20	26	30
GBZ 202632	20	26	32
GBZ 202635	20	26	35
GBZ 202640	20	26	40
GBZ 202716	20	27	16
GBZ 202720	20	27	20
GBZ 202725	20	27	25
GBZ 202732	20	27	32
GBZ 202815	20	28	15
GBZ 202816	20	28	16
GBZ 202818	20	28	18
GBZ 202820	20	28	20
GBZ 202822	20	28	22
GBZ 202825	20	28	25
GBZ 202828	20	28	28
GBZ 202830	20	28	30
GBZ 202832	20	28	32
GBZ 202835	20	28	35
GBZ 202836	20	28	36
GBZ 202840	20	28	40
GBZ 202850	20	28	50
GBZ 203020	20	30	20
GBZ 203025	20	30	25
GBZ 203030	20	30	30
GBZ 203035	20	30	35
GBZ 203040	20	30	40
GBZ 222715	22	27	15
GBZ 222718	22	27	18

Article no.	d	D	L
GBZ 222720	22	27	20
GBZ 222722	22	27	22
GBZ 222725	22	27	25
GBZ 222728	22	27	28
GBZ 222730	22	27	30
GBZ 222735	22	27	35
GBZ 222736	22	27	36
GBZ 222740	22	27	40
GBZ 222820	22	28	20
GBZ 222825	22	28	25
GBZ 222830	22	28	30
GBZ 222835	22	28	35
GBZ 222840	22	28	40
GBZ 222918	22	29	18
GBZ 222922	22	29	22
GBZ 222928	22	29	28
GBZ 222936	22	29	36
GBZ 223220	22	32	20
GBZ 223230	22	32	30
GBZ 253020	25	30	20
GBZ 253025	25	30	25
GBZ 253030	25	30	30
GBZ 253032	25	30	32
GBZ 253035	25	30	35
GBZ 253040	25	30	40
GBZ 253215	25	32	15
GBZ 253220	25	32	20
GBZ 253225	25	32	25
GBZ 253230	25	32	30
GBZ 253232	25	32	32
GBZ 253235	25	32	35
GBZ 253240	25	32	40
GBZ 253245	25	32	45
GBZ 253525	25	35	25
GBZ 253530	25	35	30
GBZ 253535	25	35	35
GBZ 253540	25	35	40
GBZ 253545	25	35	45
GBZ 253550	25	35	50

**GBZ Cylinder bushings**

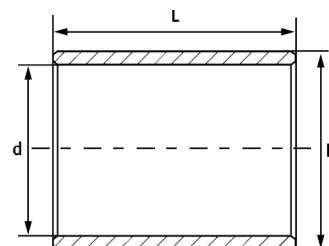


Article no.	d	D	L
GBZ 254535	25	35	45
GBZ 283222	28	32	22
GBZ 283228	28	32	28
GBZ 283236	28	32	36
GBZ 283245	28	32	45
GBZ 283322	28	33	22
GBZ 283328	28	33	28
GBZ 283336	28	33	36
GBZ 283345	28	33	45
GBZ 283525	28	35	25
GBZ 283530	28	35	30
GBZ 283535	28	35	35
GBZ 283540	28	35	40
GBZ 283545	28	35	45
GBZ 283550	28	35	50
GBZ 283622	28	36	22
GBZ 283625	28	36	25
GBZ 283628	28	36	28
GBZ 283636	28	36	36
GBZ 283645	28	36	45
GBZ 303520	30	35	20
GBZ 303525	30	35	25
GBZ 303530	30	35	30
GBZ 303535	30	35	35
GBZ 303540	30	35	40
GBZ 303545	30	35	45
GBZ 303550	30	35	50
GBZ 303615	30	36	15
GBZ 303630	30	36	30
GBZ 303638	30	36	38
GBZ 303820	30	38	20
GBZ 303824	30	38	24
GBZ 303825	30	38	25
GBZ 303830	30	38	30
GBZ 303832	30	38	32
GBZ 303835	30	38	35
GBZ 303838	30	38	38
GBZ 303840	30	38	40
GBZ 303845	30	38	45

Article no.	d	D	L
GBZ 303850	30	38	50
GBZ 304020	30	40	20
GBZ 304025	30	40	25
GBZ 304030	30	40	30
GBZ 304032	30	40	32
GBZ 304035	30	40	35
GBZ 304040	30	40	40
GBZ 304045	30	40	45
GBZ 304050	30	40	50
GBZ 304060	30	40	60
GBZ 305060	30	50	60
GBZ 323820	32	38	20
GBZ 323825	32	38	25
GBZ 323832	32	38	32
GBZ 323840	32	38	40
GBZ 323850	32	38	50
GBZ 324020	32	40	20
GBZ 324025	32	40	25
GBZ 324030	32	40	30
GBZ 324032	32	40	32
GBZ 324035	32	40	35
GBZ 324040	32	40	40
GBZ 324045	32	40	45
GBZ 324050	32	40	50
GBZ 353940	35	39	40
GBZ 354020	35	40	20
GBZ 354025	35	40	25
GBZ 354030	35	40	30
GBZ 354035	35	40	35
GBZ 354040	35	40	40
GBZ 354045	35	40	45
GBZ 354050	35	40	50
GBZ 354125	35	41	25
GBZ 354135	35	41	35
GBZ 354140	35	41	40
GBZ 354418	35	44	18
GBZ 354422	35	44	22
GBZ 354428	35	44	28
GBZ 354435	35	44	35

Article no.	d	D	L
GBZ 354436	35	44	36
GBZ 354525	35	45	25
GBZ 354530	35	45	30
GBZ 354535	35	45	35
GBZ 354540	35	45	40
GBZ 354545	35	45	45
GBZ 354550	35	45	50
GBZ 354560	35	45	60
GBZ 354570	35	45	70
GBZ 364222	36	42	22
GBZ 364228	36	42	28
GBZ 364236	36	42	36
GBZ 364245	36	42	45
GBZ 364522	36	45	22
GBZ 364528	36	45	28
GBZ 364536	36	45	36
GBZ 364545	36	45	45
GBZ 384425	38	44	25
GBZ 384435	38	44	35
GBZ 384445	38	44	45
GBZ 384825	38	48	25
GBZ 384835	38	48	35
GBZ 384845	38	48	45
GBZ 384855	38	48	55
GBZ 404535	40	45	35
GBZ 404540	40	45	40
GBZ 404545	40	45	45
GBZ 404550	40	45	50
GBZ 404625	40	46	25
GBZ 404630	40	46	30
GBZ 404632	40	46	32
GBZ 404640	40	46	40
GBZ 404650	40	46	50
GBZ 405025	40	50	25
GBZ 405030	40	50	30
GBZ 405032	40	50	32
GBZ 405040	40	50	40
GBZ 405045	40	50	45
GBZ 405050	40	50	50

# GBZ Cylinder bushings

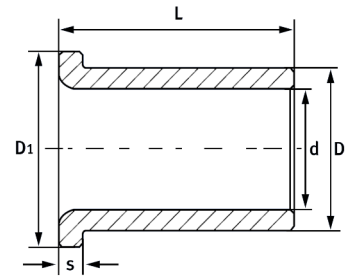
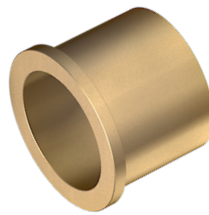


Article no.	d	D	L
GBZ 405060	40	50	60
GBZ 405080	40	50	80
GBZ 455128	45	51	28
GBZ 455135	45	51	35
GBZ 455136	45	51	36
GBZ 455145	45	51	45
GBZ 455155	45	51	55
GBZ 455156	45	51	56
GBZ 455530	45	55	30
GBZ 455535	45	55	35
GBZ 455540	45	55	40
GBZ 455545	45	55	45
GBZ 455550	45	55	50
GBZ 455555	45	55	55
GBZ 455560	45	55	60
GBZ 455565	45	55	65
GBZ 455628	45	56	28
GBZ 455636	45	56	36
GBZ 455645	45	56	45
GBZ 455656	45	56	56
GBZ 456040	45	60	40
GBZ 456045	45	60	45
GBZ 456050	45	60	50
GBZ 456060	45	60	60
GBZ 456580	45	65	80
GBZ 505632	50	56	32
GBZ 505640	50	56	40
GBZ 505650	50	56	50
GBZ 505663	50	56	63
GBZ 506032	50	60	32
GBZ 506035	50	60	35
GBZ 506040	50	60	40
GBZ 506045	50	60	45
GBZ 506050	50	60	50
GBZ 506060	50	60	60
GBZ 506063	50	60	63
GBZ 506070	50	60	70
GBZ 5060100	50	60	100
GBZ 507070	50	70	70

Article no.	d	D	L
GBZ 556540	55	65	40
GBZ 556555	55	65	55
GBZ 556570	55	65	70
GBZ 557070	55	70	70
GBZ 606850	60	68	50
GBZ 606860	60	68	60
GBZ 606870	60	68	70
GBZ 607050	60	70	50
GBZ 607060	60	70	60
GBZ 607090	60	70	90
GBZ 6070120	60	70	120
GBZ 607250	60	72	50
GBZ 607260	60	72	60
GBZ 607263	60	72	63
GBZ 607270	60	72	70
GBZ 607560	60	75	60
GBZ 607590	60	75	90
GBZ 608090	60	80	90
GBZ 6080120	60	80	120
GBZ 637040	63	70	40
GBZ 637050	63	70	50
GBZ 637560	63	75	60
GBZ 658060	65	80	60
GBZ 708060	70	80	60
GBZ 708090	70	80	90
GBZ 7080120	70	80	120
GBZ 708560	70	85	60
GBZ 708590	70	85	90
GBZ 758570	75	85	70
GBZ 7585100	75	85	100
GBZ 759063	75	90	63
GBZ 7590100	75	90	100
GBZ 809090	80	90	90
GBZ 809563	80	95	63
GBZ 809570	80	95	70
GBZ 8095100	80	95	100
GBZ 8010080	80	100	80
GBZ 80100120	80	100	120
GBZ 8595100	85	95	100

Article no.	d	D	L
GBZ 9010580	90	105	80
GBZ 9011080	90	110	80
GBZ 10012080	100	120	80
GBZ 100120100	100	120	100
GBZ 100120120	100	120	120
GBZ 110125120	110	125	120
GBZ 125150120	125	150	120

**GBF Flanged bushings**



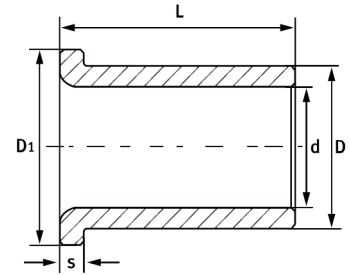
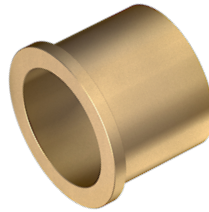
Article no..	d	D	D <sub>1</sub>	s	L
GBF 030504	3	5	8	1.5	4
GBF 030604	3	6	9	1.5	4
GBF 030605	3	6	9	1.5	5
GBF 030606	3	6	9	1.5	6
GBF 030610	3	6	9	1.5	10
GBF 040806a	4	8	10	1.5	6
GBF 040806/F2	4	8	10	2	6
GBF 040803	4	8	12	2	3
GBF 040804	4	8	12	2	4
GBF 040805	4	8	12	2	5
GBF 040806	4	8	12	2	6
GBF 040808	4	8	12	2	8
GBF 040810	4	8	12	2	10
GBF 040812	4	8	12	2	12
GBF 050904	5	9	13	2	4
GBF 050905	5	9	13	2	5
GBF 050908	5	9	13	2	8
GBF 051006	5	10	12	2	6
GBF 061004	6	10	14	2	4
GBF 061006	6	10	14	2	6
GBF 061010	6	10	14	2	10
GBF 061014	6	10	14	2	14
GBF 061016	6	10	14	2	16
GBF 061006/F3	6	10	14	3	6
GBF 061206	6	12	14	2	6
GBF 071010	7	10	15	3	10
GBF 071210	7	12	15	3	10
GBF 081214	8	12	14	2	14
GBF 081206	8	12	16	2	6
GBF 081208	8	12	16	2	8
GBF 081210	8	12	16	2	10
GBF 081212	8	12	16	2	12
GBF 081215	8	12	16	2	15
GBF 081216	8	12	16	2	16
GBF 081408	8	14	18	3	8
GBF 091406	9	14	19	2.5	6
GBF 091410	9	14	19	2.5	10
GBF 091414	9	14	19	2.5	14
GBF 101310	10	13	16	1.5	10

Article no.	d	D	D <sub>1</sub>	s	L
GBF 101316	10	13	16	1.5	16
GBF 101320	10	13	16	1.5	20
GBF 101410	10	14	18	2	10
GBF 101415	10	14	18	2	15
GBF 101420	10	14	18	2	20
GBF 101410/F3	10	14	18	3	10
GBF 101411F3	10	14	18	3	11
GBF 101510	10	15	18	2.5	10
GBF 101516	10	15	20	2.5	16
GBF 101520	10	15	20	2.5	20
GBF 101510/F3	10	15	20	3	10
GBF 101515/F3	10	15	20	3	15
GBF 101520F3	10	15	20	3	20
GBF 101615	10	16	20	2	15
GBF 101620	10	16	20	2	20
GBF 101618/F3	10	16	20	3	18
GBF 101620/F3	10	16	20	3	20
GBF 101608/F3	10	16	22	3	08
GBF 101610/F3	10	16	22	3	10
GBF 101616/F3	10	16	22	3	16
GBF 121512	12	15	18	1.5	12
GBF 121516	12	15	18	1.5	16
GBF 121520	12	15	18	1.5	20
GBF 121620	12	16	18	2	20
GBF 121615	12	16	20	3	15
GBF 121712	12	17	22	2.5	12
GBF 121716	12	17	22	2.5	16
GBF 121720	12	17	22	2.5	20
GBF 121725	12	17	22	2.5	25
GBF 121710/F3	12	17	22	3	10
GBF 121715/F3	12	17	22	3	15
GBF 121720/F3	12	17	22	3	20
GBF 121725/F3	12	17	22	3	25
GBF 121810	12	18	22	3	10
GBF 121812	12	18	22	3	12
GBF 121812/F4	12	18	22	4	12
GBF 121808/F3	12	18	24	3	8
GBF 121812/F3	12	18	24	3	12
GBF 121820/F3	12	18	24	3	20

Article no.	d	D	D <sub>1</sub>	s	L
GBF 141814	14	18	22	2	14
GBF 141818	14	18	22	2	18
GBF 141822	14	18	22	2	22
GBF 142015	14	20	25	3	15
GBF 142020	14	20	25	3	20
GBF 142025	14	20	25	3	25
GBF 142030/F3	14	20	25	3	30
GBF 142010/F3	14	20	26	3	10
GBF 142014/F3	14	20	26	3	14
GBF 142018/F3	14	20	26	3	18
GBF 142020/F3	14	20	26	3	20
GBF 142022/F3	14	20	26	3	22
GBF 142028/F3	14	20	26	3	28
GBF 151916	15	19	23	2	16
GBF 151920	15	19	23	2	20
GBF 151925	15	19	23	2	25
GBF 152015	15	20	25	3	15
GBF 152020/F2	15	20	25	2	20
GBF 152025	15	20	25	3	25
GBF 152030	15	20	25	3	30
GBF 152019/F3	15	20	26	3	19
GBF 152116	15	21	26	5	16
GBF 152110	15	21	27	3	10
GBF 152115	15	21	27	3	15
GBF 152116	15	21	27	3	16
GBF 152120	15	21	27	3	20
GBF 152125	15	21	27	3	25
GBF 152132	15	21	27	3	32
GBF 152212	15	22	28	3	12
GBF 152216	15	22	28	3	16
GBF 162016	16	20	24	2	16
GBF 162020	16	20	24	2	20
GBF 162025	16	20	24	2	25
GBF 162212	16	22	28	3	12
GBF 162215	16	22	28	3	15
GBF 162216	16	22	28	3	16
GBF 162220	16	22	28	3	20
GBF 162225	16	22	28	3	25
GBF 162230	16	22	28	3	30



**GBF Flanged bushings**

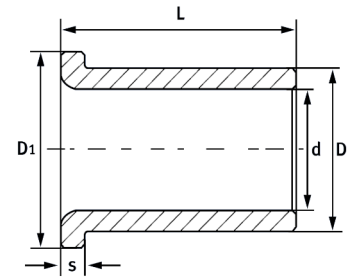
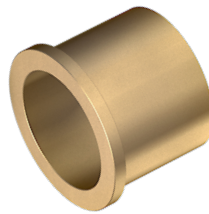


Article no.	d	D	D <sub>1</sub>	s	L
GBF 162232	16	22	28	3	32
GBF 162212/F4	16	22	28	4	12
GBF 162216/F4	16	22	28	4	16
GBF 162216/F5	16	22	28	5	16
GBF 182218	18	22	26	2	18
GBF 182222	18	22	26	2	22
GBF 182228	18	22	26	2	28
GBF 182412	18	24	30	3	12
GBF 182418	18	24	30	3	18
GBF 182422	18	24	30	3	22
GBF 182428	18	24	30	3	28
GBF 182430	18	24	30	3	30
GBF 182418/F5	18	24	30	5	18
GBF 182512	18	25	32	4	12
GBF 182516	18	25	32	4	16
GBF 182520	18	25	32	4	20
GBF 182525	18	25	32	4	25
GBF 182530	18	25	32	4	30
GBF 182535	18	25	32	4	35
GBF 202416	20	24	28	2	16
GBF 202420	20	24	28	2	20
GBF 202425	20	24	28	2	25
GBF 202615	20	26	32	3	15
GBF 202616	20	26	32	3	16
GBF 202620	20	26	32	3	20
GBF 202625	20	26	32	3	25
GBF 202630	20	26	32	3	30
GBF 202632	20	26	32	3	32
GBF 202620/F5	20	26	32	5	20
GBF 202625/F5	20	26	32	5	25
GBF 202630/F5	20	26	32	5	30
GBF 202816	20	28	35	4	16
GBF 202820	20	28	35	4	20
GBF 202825	20	28	35	4	25
GBF 202830	20	28	35	4	30
GBF 202835	20	28	35	4	35
GBF 222718	22	27	32	2.5	18
GBF 222722	22	27	32	2.5	22
GBF 222728	22	27	32	2.5	28

Article no.	d	D	D <sub>1</sub>	s	L
GBF 222820	22	28	33	4	20
GBF 222825	22	28	33	4	25
GBF 222830	22	28	33	4	30
GBF 222835	22	28	33	4	35
GBF 222840	22	28	33	4	40
GBF 222815	2	28	34	3	15
GBF 222820/F3	22	28	34	3	20
GBF 222825/F3	22	28	34	3	25
GBF 222830/F3	22	28	34	3	30
GBF 222822	22	28	34	5	22
GBF 222918	22	29	36	3.5	18
GBF 222922	22	29	36	3.5	22
GBF 222928	22	29	36	3.5	28
GBF 222936	22	29	36	3.5	36
GBF 253020	25	30	35	2.5	20
GBF 253025	25	30	35	2.5	25
GBF 253032	25	30	35	2.5	32
GBF 253225/F6	25	32	38	6	25
GBF 253220	25	32	39	3.5	20
GBF 253225	25	32	39	3.5	25
GBF 253230	25	32	39	3.5	30
GBF 253232	25	32	39	3.5	32
GBF 253220/F4	25	32	40	4	20
GBF 253225/F4	25	32	40	4	25
GBF 253230/F4	25	32	40	4	30
GBF 253235/F4	25	32	40	4	35
GBF 253240/F4	25	32	40	4	40
GBF 253516	25	35	45	5	16
GBF 253525	25	35	45	5	25
GBF 253528	25	35	45	5	28
GBF 283322	28	33	38	2.5	22
GBF 283328	28	33	38	2.5	28
GBF 283336	28	33	38	2.5	36
GBF 283622	28	36	44	4	22
GBF 283625	28	36	44	4	25
GBF 283628	28	36	44	4	28
GBF 283630	28	36	44	4	30
GBF 283635	28	36	44	4	35
GBF 283636	28	36	44	4	36

Article no.	d	D	D <sub>1</sub>	s	L
GBF 283640	28	36	44	4	40
GBF 303820	30	38	46	4	20
GBF 303825	30	38	46	4	25
GBF 303830	30	38	46	4	30
GBF 303832	30	38	44	6	32
GBF 304025	30	40	48	4	25
GBF 304030	30	40	48	4	30
GBF 304035	30	40	48	4	35
GBF 304040	30	40	48	4	40
GBF 304020	30	40	50	5	20
GBF 304030	30	40	50	5	30
GBF 323820	32	38	4	3	20
GBF 323825	32	38	44	3	25
GBF 323832	32	38	44	3	32
GBF 324020	32	40	48	4	20
GBF 324025	32	40	48	4	25
GBF 324030	32	40	48	4	30
GBF 324032	32	40	48	4	32
GBF 324032	32	40	46	6	32
GBF 324035	32	4	48	4	35
GBF 324040	32	40	48	4	40
GBF 354436	35	44	50	6	36
GBF 354520	35	45	55	5	20
GBF 354525	35	45	55	5	25
GBF 354530	35	45	55	5	30
GBF 354535	35	45	55	5	35
GBF 354540	35	45	55	5	40
GBF 364222	36	42	48	3	22
GBF 364228	36	42	48	3	28
GBF 364236	36	42	48	3	36
GBF 364522	36	45	54	4.5	22
GBF 364528	36	45	54	4.5	28
GBF 364536	36	45	54	4.5	36
GBF 404625	40	46	52	3	25
GBF 404632	40	46	52	3	32
GBF 404640	40	46	52	3	40
GBF 405040/F6	40	50	58	6	40
GBF 405025	40	50	60	5	25
GBF 405030	40	50	60	5	30

## GBF Flanged bushings



Article no.	d	D	D <sub>1</sub>	s	L	Article no.	d	D	D <sub>1</sub>	s	L
GBF 405032	40	50	60	5	32	GBF 505650	50	56	62	3	50
GBF 405035	40	50	60	5	35	GBF 506050	50	60	68	7	50
GBF 405040	40	50	60	5	40	GBF 506032	50	60	70	5	32
GBF 405050	40	50	60	5	50	GBF 506035	50	60	70	5	35
GBF 405025/F6	40	50	60	6	25	GBF 506040	50	60	70	5	40
GBF 405040/F6	40	50	60	6	40	GBF 506050	50	60	70	5	50
GBF 455128	45	51	57	3	28	GBF 506030/F6	50	60	70	6	30
GBF 455136	45	51	57	3	36	GBF 506050/F6	50	60	70	6	50
GBF 455145	45	51	57	3	45	GBF 607050	60	70	80	5	50
GBF 455545/F7	45	55	63	7	45	GBF 607060	60	70	80	5	60
GBF 455535	45	55	65	5	35	GBF 607263	60	72	83	7	63
GBF 455545	45	55	65	5	45	GBF 607250	60	72	84	6	50
GBF 455555	45	55	65	5	55	GBF 607260	60	72	84	6	60
GBF 455545/F6	45	55	65	6	45	GBF 607535	60	75	85	8	35
GBF 455622	45	56	67	2.5	22	GBF 607560	60	75	85	8	60
GBF 455628	45	56	67	5.5	28	GBF 708560	70	85	95	8	60
GBF 455636	45	56	67	5.5	36	GBF 809570	80	95	105	8	70
GBF 455645	45	56	67	5.5	45	GBF 9011050	90	110	120	8	50
GBF 505632	50	56	62	3	32	GBF 10012080	100	120	130	8	80
GBF 505640	50	56	62	3	40						

**Publisher and design: MTO & Co. AG**

**Copyright© MTO & Co. AG**

Reprinting, including excerpts, is only permitted after consultation with MTO & Co. if the source is stated and a specimen copy is sent.

The information in this technical publication is based on our general experience and knowledge at the time of printing and is intended to provide the technically experienced reader with information on possible applications. However, the product information does not contain any assurance of properties or guarantee of the suitability of the product for the individual case. It does not release the user from the obligation to test the application of the selected product in advance. We recommend an individual consultation and will be happy to provide samples for testing if requested and possible.

MTO products are subject to continuous further development.

Therefore, MTO & CO. AG reserves the right to change all technical data in this publication at any time and without prior notice.



HIGH TECHNOLOGY FOR PROFESSIONALS

**HEADQUARTER  
SWITZERLAND  
MTO & Co. AG**

Grabenstrasse 9  
CH-7324 Vilters  
T +41 81 300 40 00  
www.mtoswiss.ch  
info@mtoswiss.ch

**BRANCH AUSTRIA  
MTO Union GmbH**

Münkefeld 7b  
A-6800 Feldkirch  
T +43 55 223 78 26  
www.mtoeurope.com  
info@mtoeurope.com